

## IES Report

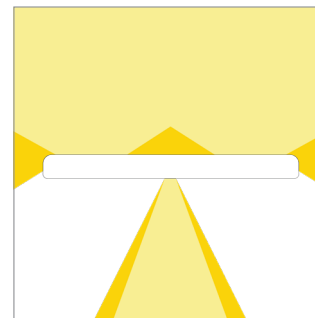
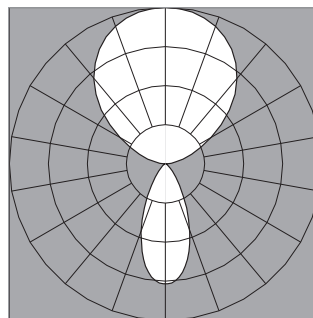
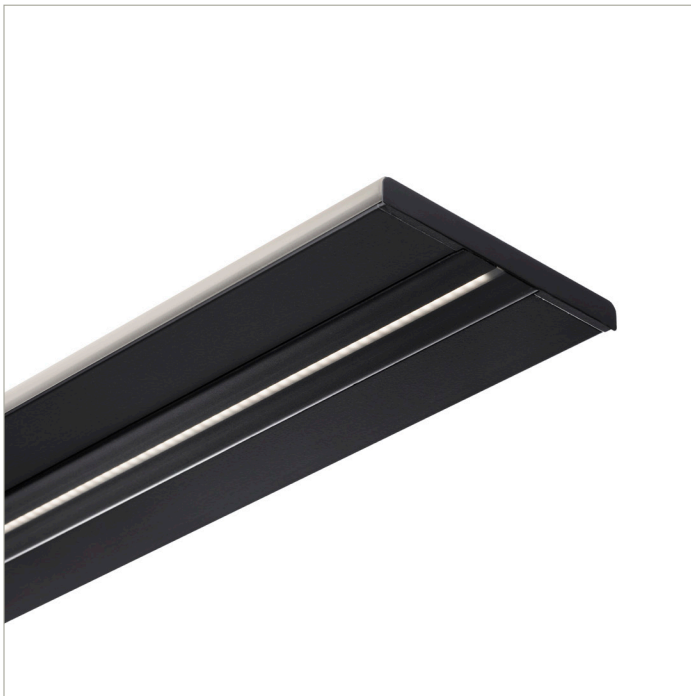
### ZipThree® | Ceiling Cable | 707 | Symmetric with EdgeGlow, up | 40° Symmetric, down | 80 CRI | LO

707-Z3-XX-4-48-CC-XX-XX-XX-X-0-Z-LO-35-U2S1-0-BL-X

	2700K	3000K	3500K	4000K
Efficacy - Lumens per Watt	84	86	88	88
Total Lumens, 4' rail length (1219mm)	2473	2551	2603	2603
Lumens per foot (305mm)	618	638	651	651
Lumens per foot UP (305mm)	473	488	497	497
Lumens per foot DOWN (305mm)	146	150	153	153
Input Power (W), 4' rail length (1219mm)	29.8	29.8	29.8	29.8
Watts per foot (305mm)	7.5	7.5	7.5	7.5
CRI	82	82	82	82

Due to the large number of options in Vode's product offering, most Vode IES reports are factored reports prepared from source reports. Source reports are the IES test reports prepared for Vode by an NVLAP accredited photometric test laboratory. Factored reports are based on data from the Vode source reports.

If the data above is in black, it is directly from a Vode source report. If it is in grey, it is factored from Vode source reports. Reference details on Vode source reports can be found on the [IES File Finder](#) page on [vode.com](https://vode.com).



## IES Report

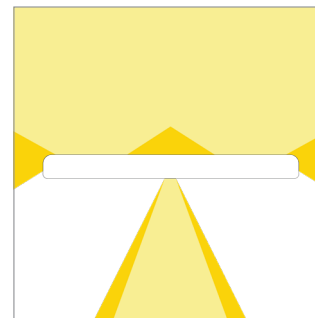
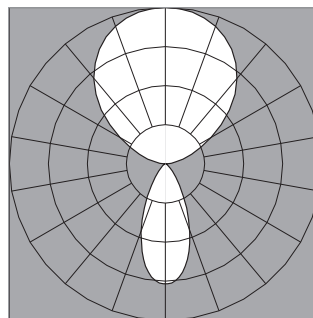
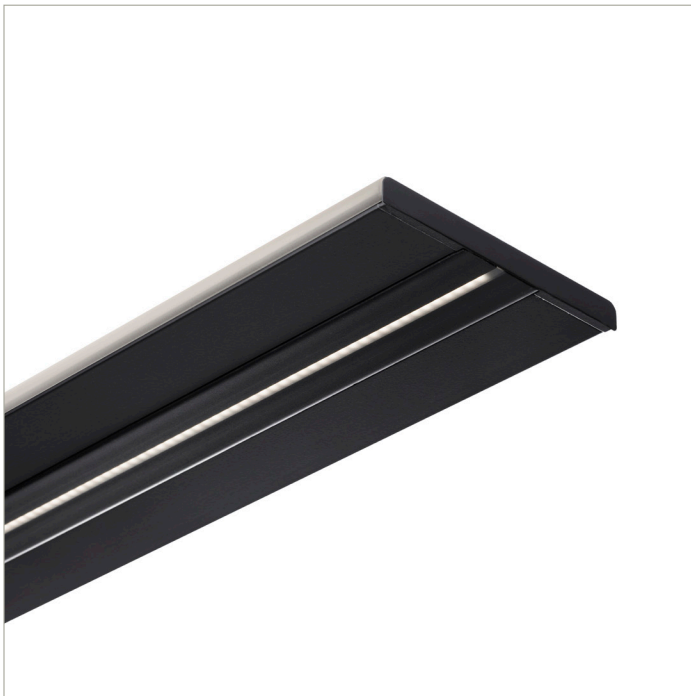
ZipThree® | Ceiling Cable | 707 | Symmetric with EdgeGlow, up | 40° Symmetric, down | 80 CRI | SO

707-Z3-XX-4-48-CC-XX-XX-XX-X-0-Z-SO-35-U2S1-0-BL-X

	2700K	3000K	3500K	4000K
Efficacy - Lumens per Watt	95	98	100	100
Total Lumens, 4' rail length (1219mm)	4946	5102	5206	5206
Lumens per foot (305mm)	1237	1276	1302	1302
Lumens per foot UP (305mm)	945	975	995	995
Lumens per foot DOWN (305mm)	291	301	307	307
Input Power (W), 4' rail length (1219mm)	52.2	52.2	52.2	52.2
Watts per foot (305mm)	13.1	13.1	13.1	13.1
CRI	82	82	82	82

Due to the large number of options in Vode's product offering, most Vode IES reports are factored reports prepared from source reports. Source reports are the IES test reports prepared for Vode by an NVLAP accredited photometric test laboratory. Factored reports are based on data from the Vode source reports.

If the data above is in black, it is directly from a Vode source report. If it is in grey, it is factored from Vode source reports. Reference details on Vode source reports can be found on the [IES File Finder](#) page on [vode.com](http://vode.com).



## IES Report

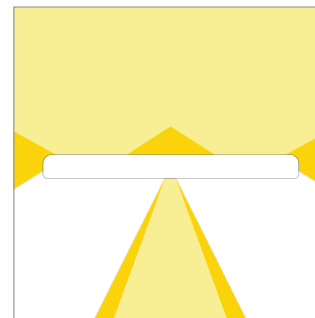
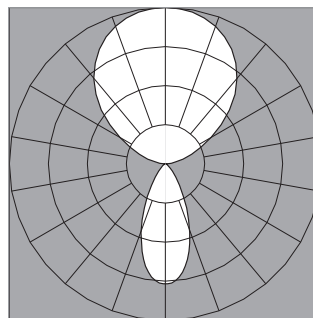
### ZipThree® | Ceiling Cable | 707 | Symmetric with EdgeGlow, up | 40° Symmetric, down | 80 CRI | HO

707-Z3-XX-4-48-CC-XX-XX-XX-X-0-Z-HO-35-U2S1-0-BL-X

	2700K	3000K	3500K	4000K
Efficacy - Lumens per Watt	88	91	92	92
Total Lumens, 4' rail length (1219mm)	9397	9694	9892	9892
Lumens per foot (305mm)	2349	2424	2473	2473
Lumens per foot UP (305mm)	1796	1853	1890	1890
Lumens per foot DOWN (305mm)	554	571	583	583
Input Power (W), 4' rail length (1219mm)	107.7	107.7	107.7	107.7
Watts per foot (305mm)	27.0	27.0	27.0	27.0
CRI	82	82	82	82

Due to the large number of options in Vode's product offering, most Vode IES reports are factored reports prepared from source reports. Source reports are the IES test reports prepared for Vode by an NVLAP accredited photometric test laboratory. Factored reports are based on data from the Vode source reports.

If the data above is in black, it is directly from a Vode source report. If it is in grey, it is factored from Vode source reports. Reference details on Vode source reports can be found on the [IES File Finder](#) page on [vode.com](http://vode.com).



## IES Report

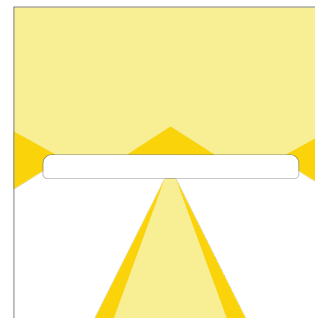
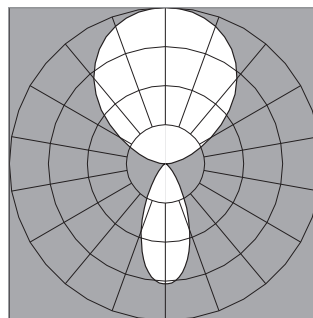
ZipThree® | Ceiling Cable | 707 | Symmetric with EdgeGlow, up | 40° Symmetric, down | 90 CRI | LO

707-Z3-XX-4-48-CC-XX-XX-XX-X-0-Z-LO-359-U2S1-0-BL-X

	2700K	3000K	3500K	4000K
Efficacy - Lumens per Watt	72	74	76	79
Total Lumens, 4' rail length (1219mm)	2132	2199	2244	2267
Lumens per foot (305mm)	533	550	561	567
Lumens per foot UP (305mm)	407	420	429	433
Lumens per foot DOWN (305mm)	126	130	132	134
Input Power (W), 4' rail length (1219mm)	29.8	29.8	29.8	29.8
Watts per foot (305mm)	7.5	7.5	7.5	7.5
CRI	94	94	94	94

Due to the large number of options in Vode's product offering, most Vode IES reports are factored reports prepared from source reports. Source reports are the IES test reports prepared for Vode by an NVLAP accredited photometric test laboratory. Factored reports are based on data from the Vode source reports.

If the data above is in black, it is directly from a Vode source report. If it is in grey, it is factored from Vode source reports. Reference details on Vode source reports can be found on the [IES File Finder](#) page on [vode.com](https://vode.com).



## IES Report

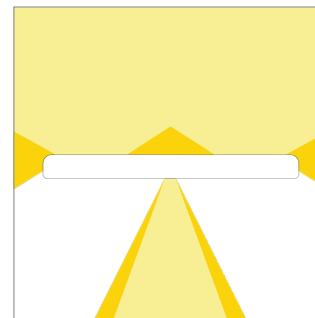
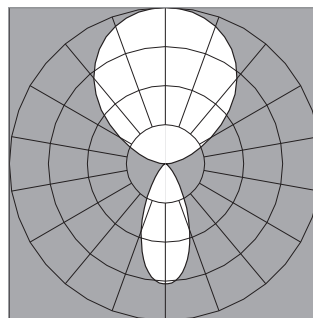
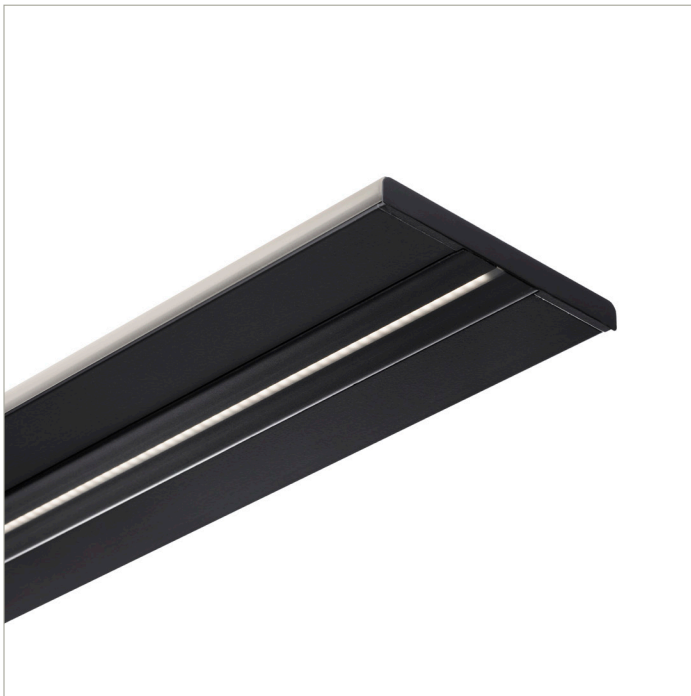
**ZipThree® | Ceiling Cable | 707 | Symmetric with EdgeGlow, up | 40° Symmetric, down | 90 CRI | SO**

707-Z3-XX-4-48-CC-XX-XX-XX-X-0-Z-SO-359-U2S1-0-BL-X

	2700K	3000K	3500K	4000K
Efficacy - Lumens per Watt	82	85	87	90
Total Lumens, 4' rail length (1219mm)	4264	4398	4488	4533
Lumens per foot (305mm)	1066	1100	1122	1133
Lumens per foot UP (305mm)	815	841	858	866
Lumens per foot DOWN (305mm)	251	259	264	267
Input Power (W), 4' rail length (1219mm)	52.2	52.2	51.8	52.2
Watts per foot (305mm)	13.1	13.1	13	13.1
CRI	94	94	94	94

Due to the large number of options in Vode's product offering, most Vode IES reports are factored reports prepared from source reports. Source reports are the IES test reports prepared for Vode by an NVLAP accredited photometric test laboratory. Factored reports are based on data from the Vode source reports.

If the data above is in black, it is directly from a Vode source report. If it is in grey, it is factored from Vode source reports. Reference details on Vode source reports can be found on the [IES File Finder](#) page on [vode.com](https://vode.com).



## IES Report

ZipThree® | Ceiling Cable | 707 | Symmetric with EdgeGlow, up | 40° Symmetric, down | 90 CRI | HO

707-Z3-XX-4-48-CC-XX-XX-XX-X-0-Z-HO-359-U2S1-0-BL-X

	2700K	3000K	3500K	4000K
Efficacy - Lumens per Watt	76	78	80	83
Total Lumens, 4' rail length (1219mm)	8101	8357	8528	8613
Lumens per foot (305mm)	2025	2089	2132	2153
Lumens per foot UP (305mm)	1548	1597	1630	1646
Lumens per foot DOWN (305mm)	477	492	502	507
Input Power (W), 4' rail length (1219mm)	107.7	107.7	107.7	107.7
Watts per foot (305mm)	27	27	27	27
CRI	94	94	94	94

Due to the large number of options in Vode's product offering, most Vode IES reports are factored reports prepared from source reports. Source reports are the IES test reports prepared for Vode by an NVLAP accredited photometric test laboratory. Factored reports are based on data from the Vode source reports.

If the data above is in black, it is directly from a Vode source report. If it is in grey, it is factored from Vode source reports. Reference details on Vode source reports can be found on the [IES File Finder](#) page on [vode.com](https://vode.com).